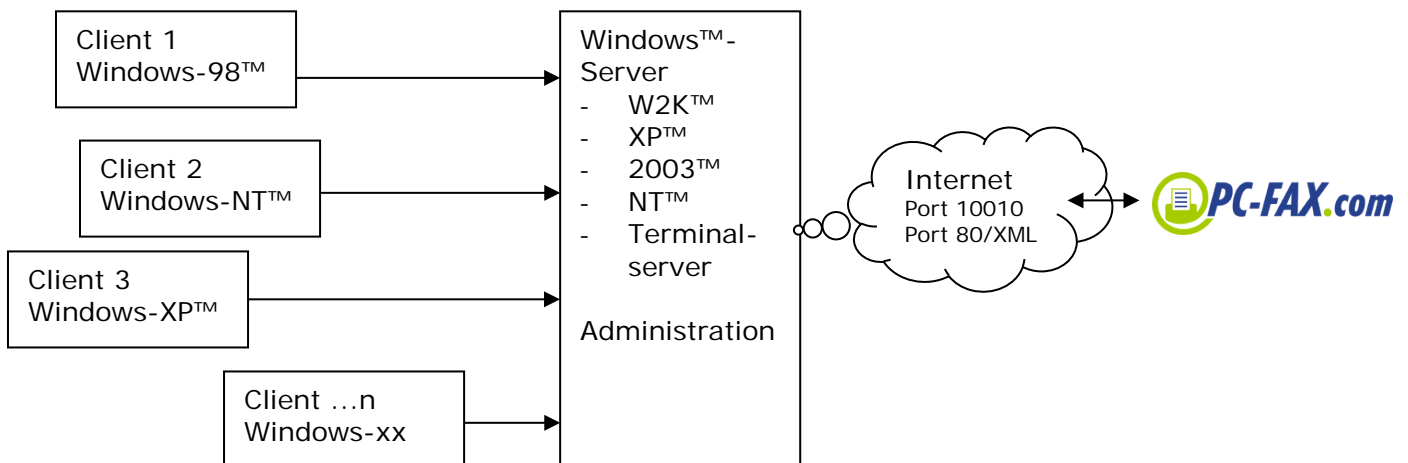


Welcome

Thank you for choosing EASY-NET. EASY-NET is a sophisticated client/server solution for shipping faxes, SMS and mail letters. There is no need for a telephone line because our server is connected to thousands of lines via the Internet where approx. 1,000 faxes, 3,000 SMS and 500 mail letters can be sent in one minute. This all works without technical installation and the number of clients is not restricted.

How Easy-NET works

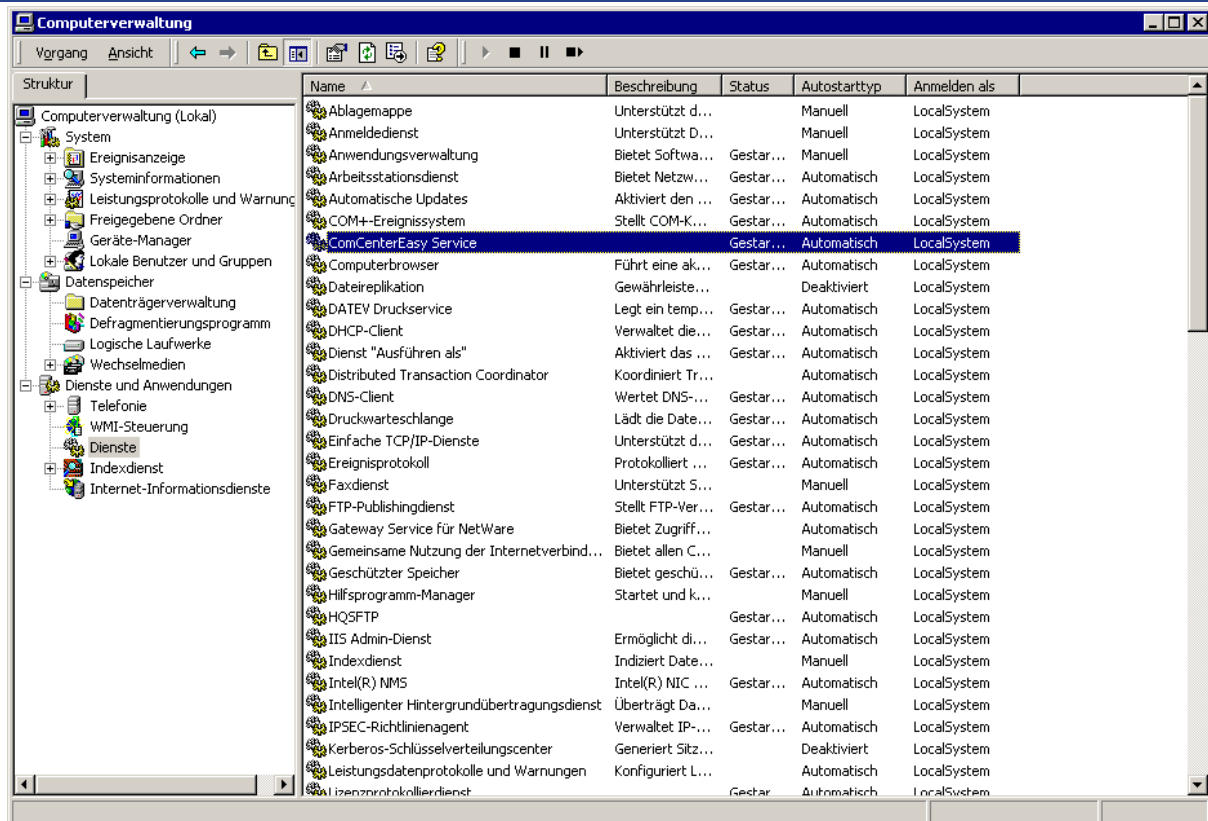


How to install Easy-Net

The installation of the server software is almost completely automatic.

Please remember that a previous installation will stop the service "ComCenterEasy Service" on the server. You will find this in Computer Settings under "services".

Before starting the installation, please end this service with the stop button.



Installation of Easy-Net step by step

1. Download EASY-NET from www.pc-fax.com and copy the EXE-file in a suitable register on your server (access must be possible from all clients).
2. Start the download program with statement the default (public) register: `c:\program files\xax.de\comcenter`
3. This register has to be released in the network (assign read and write permissions; then go to Explorer and open this folder, right-click and then check release and security)
4. A client will also be installed on the server. Start this client (program ComCenterEasy.exe in the public EASY-NET folder). During the initial start, help and printer driver archives will be unpacked. This only takes a few minutes...
5. During the initial start, the registration window will pop up. Please choose "I am a customer already" or select "new registration". If you are already a customer, the EASYSetup window will follow. Please enter your customer number and your password.

6. Open the setup (go to the bottom right of your screen and click on the EASY-Symbol with the right mouse button, then choose SETUP)
7. Enter as the local server localhost
8. Open administration (only possible as an administrator) and assign the user rights.
9. Go to the general setup and adjust sending and receiving. You can now close the client.
10. Start the service "ComCenterEasy Service" in service administration (where appropriate attend \Protokolle\CCE Service.log)

How to assign user rights

An entry "administration" will be offered in the popup menu (go to the bottom right of the screen and choose the EASY-Symbol with the right mouse button). By clicking on this entry as the administrator, you can define the rights for future clients (fax, SMS, letter, fax receiving, administrator). If you do not enter the clients, they will have the same rights as the already installed "default" user.

Test

Please test the broadcast functions by using the client software on the server and send a test fax or a test SMS.

Installation of clients/working situations

We have put a lot of effort in making the installation of the clients as automated as possible. Nevertheless, it may still happen that clients cannot be fully automatically installed; usually, the user does not have the required rights (e.g. installation of additional printers or access to the EASY-NET server register).

For the auto installation of the client, follow these instructions:

- From your work station, go to the public EASY-NET server register and open the program ClientInst.exe

The software will now try to install the necessary components along with two extra “printers” (EASY Internetfax and EASY Internet Letter) for direct broadcast from the existing software.

Problems with rights, respectively missing components on the workstation will be reported if need be.

After the automatic installation is completed, the EASY-Icon appears on the desktop and on the right taskbar. EASY-Printers must be installed.

Manual client installation

For technical reasons it may be necessary to install the EASY-Client on the workstation manually. In this case follow the instructions below:

- go to the server release and start the client ComCenterEasy.exe., create a link on the client desktop if necessary
- fill in the server and data register in the network setup
 - local server: <servername>
 - data register: UNC-name of the server release (e.g. [\\server\ComCenter](#))
- go to printer in order to set up EASY Internetfax and EASY Internet Letter

Different from the standard version, the network version saves the data in an Access database which ensures access via the DAO-Com-Interface. This interface may not be installed on every computer. Usually in this case, the appropriate DLL already exists in the register c: \programme\gemeinsame dateien\Microsoft

shared\dao\dao360.dll This DLL must then be registered in the system with regsvr32 dao360.dll.

Should the workstation not have these components installed, please reinstall them. We have included these components in the EASY-NET server drive.

- Copy DAO360.DLL into c:\programme\gemeinsame dateien\Microsoft shared\dao\ and register with regsvr32
- Start the program MDAC_typ.exe. This will install more Access components